

# GLORIA®

Equipment for home and garden



## Profiline



## Sprayers for Industry and Trade



# News



## High performance sprayers 505 TK and 510 TK Profiline

Two proven high performance sprayers made of non-corroding stainless steel are now available in a new design with an integrated compressor connection: this makes working with the 5 l and 10 l models even simpler and more comfortable. Manual re-pumping is no longer required; longer working cycles provide for a use with an even greater efficiency.



## PaintPro 5

A robust pressurised sprayer which is designed for a wide range of uses. Viton seals, a reinforced plastic spraying lance and a special flat jet nozzle made of brass make it a high-performance assistant when it comes to removing wallpaper, applying solvent-free primers or sprayable wood preservation oils and solvent-free wood scumble.



## Type 90 pressurised sprayer

The new type 90 pressurised sprayer which can hold 1.25 l is oil-proof, compact and handy. An ergonomic handle and the adjustable nozzle make working with this device especially comfortable and the special thing about it: the type 90 can also spray "overhead" thanks to a flexible siphon tube on the inside. This makes the use at spots which are difficult to reach easy.



## SOX 125 pressurised sprayer

Another model which can hold 1.25 l of a liquid. It is just as compact and handy as the type 90 but the SOX 125 is especially suitable for spraying acidic and alkaline media (details s. page 8).



# GLORIA Quality



The **GLORIA Profiline sprayer range is the result of decades of tradition and experience.** The development engineers have had the rough working conditions and high technical requirements of the professional users in mind right from year one.

The high quality requirements are also reflected in the manufacturing process. Only **high quality materials** are used, no matter whether for the plastic or stainless steel models.

GLORIA also does not accept any compromises during production: The **latest technical plants** form the basis for optimal production conditions.

**Experienced production staff** guarantees the required care during assembly.

**Repeated inspections** of the components during the manufacturing process also exclude any errors at an early stage.

Furthermore, the higher quality models in the GLORIA sprayer range are exclusively made in Germany. Direct inspections and the exertion of influence on the production, the deployment of highly specialised qualified personnel and the greatest flexibility when producing custom-made products – these are all reasons why **Made in Germany** is still synonymous with the highest quality standards at GLORIA.

The result of all these efforts: robust sprayers which are designed for reliable use on building sites, in workshops or in extreme climate zones around the world.

- The durability is convincing.
- The ergonomics make the work easy and simple.
- Long-lasting seals, precision worked nozzles and comprehensive accessories communicate the unique pleasure one has when handling a GLORIA product.

GLORIA works in accordance with the **Quality standard DIN ISO 9001 guidelines.** This means a constant quality of the products and services, a permanent reliability and a high performance.

In addition to the **CE certificate**, numerous models have also been awarded the **German TuEV/GS seal of quality** as proof of its excellent safety level.

GLORIA will guarantee spare parts being available for 10 years after purchase for all of the products in the following range. So customers can also profit from the quality of their Profiline sprayer long-term.

**These are the arguments which justify placing trust in the GLORIA sprayers!**

GLORIA Quality – more than just a term!



# The GLORIA sprayer programmes for special applications



## GLORIA sprayers are excellently approved in the following fields:

- in concrete and building trade for dispersion of mould oil
- in car care and maintenance (e.g. cleaning of engine compartment or wheel housings)
- in cleaning works in the diverse fields of food industry
- in painting craft for soaking through of wallpaper and spraying of walls
- for cleaning and disinfection of stables and rooms in agriculture
- for disinfection of sanitary facilities
- for pest control
- for control of epidemics

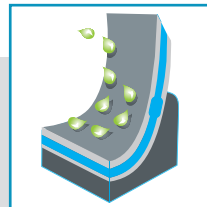
GLORIA provides a comprehensive assortment of sprayers for the sophisticated application in industry, handcraft and agriculture. Particularly in professional operation these devices are under highest demand with regards to quality, functionality, versatility and equipment.



### Oil proof

Besides regular stress and extreme effects of temperature the sprayers have to sustain particularly oil rich and aggressive sprayed media. Hence, in the production of the GLORIA Profiline models only high-grade materials are used. Thus, the sprayers are mostly fitted out with Viton-seals, which in contrast to prior art seals exhibit a high thermal and chemical durability.

### Steel sprayers with plastic interior coating



The steel sprayers of the GLORIA Profiline series first of all stand out on account of their high resistance. In order to protect the container material against corrosion, they are equipped with a high-grade interior coating of plastic material. Thereby contact of aggressive sprayed media with the steel container is avoided and cleansing becomes easy, too.

### Steel sprayers made of stainless steel



Cleaning-friendly, long-lasting and robust: The particular benefits of rust-proof steel besides its high resistance against shock and wearout stress are first of all based on the extraordinary corrosion resistance. With these quality features the models 505 and 510 even meet the utmost requirements.



# The new high-performance sprayers for professional use

Manifold equipment features and helpful detail solutions characterize the new high-performance sprayers of the Profiline series. The respective 5 and 10 litre models made of robust steel or stainless refined steel convince by an outstanding degree of quality, safety and convenience in application.



**Indicating pressure gauge, safety- and vent-valve**  
The control elements and the pressure gauge are protected and well readable integrated into the filler funnel.



**Pocket**  
Spare parts like nozzles and seals can be stored there in a safe and clean way.



**Pump holder**  
During filling the pump can be hooked into the device.



**Auxiliary sieve**  
Dirt particles are collected, clogging of the nozzle is prevented. After use the sieve is being secured to the container.



**Spray lance, flat fanspray nozzle and brass quick-action vent**  
Sturdy and long-lasting.



**Brass high-performance pump with integrated hose clamp**  
With ergonomically shaped handle bar and additional clamp to mount the hose.



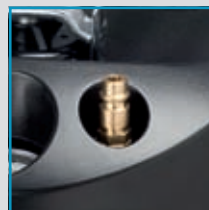
**Padded carrying straps**  
Comfortable and convenient even during longer operation.



**Big filling funnel**  
Filling up is easy through the big filling funnel.



**Spray lance accommodation and mounting**  
Protection of the nozzle and the spray lance against damage and contamination.



**Compressor connection (model dependent)**  
Constant container pressure for continuous operation without repumping manually.



**Transport carriage (can be retrofitted, specific to certain models)**  
Enhanced mobility and less muscle power.



**Spiral hose (in relation to the model or can be retrofitted respectively)**  
5 m hose for even more flexibility.

**Made in Germany**



	405 T Profiline	405 TK Profiline	405 TKS Profiline	410 T Profiline	410 TI Profiline	410 TK Profiline
art. no.	406.0000	407.2400	407.0000	412.0000	414.0000	416.2400
EAN code	404 643 600 0227	404 643 600 0531	404 643 600 0234	404 643 600 0265	404 643 600 0319	404 643 600 0548
max. operating pressure	6 bar	6 bar	6 bar	6 bar	6 bar	6 bar
capacity	5 l	5 l	5 l	10 l	10 l	10 l
container material	steel with high-grade plastic interior coating	steel with high-grade plastic interior coating	steel with high-grade plastic interior coating	steel with high-grade plastic interior coating	steel with high-grade plastic interior coating	steel with high-grade plastic interior coating
TÜV/GS tested	●	●	●	●	●	●
pressure gauge	●	●	●	●	●	●
safety- and vent valve	●	●	●	●	●	●
carrying system	padded carrying strap	padded carrying strap	padded carrying strap	2 padded carrying straps with quick-release system and backrest	2 padded carrying straps with quick-release system and backrest	2 padded carrying straps with quick-release system and backrest
spiral hose	○	○	●	○	○	○
compressor connection	○	●	●	○	○	●
undercarriage	○	○	○	optional	optional	optional
oil proof	●	●	●	●	○	●

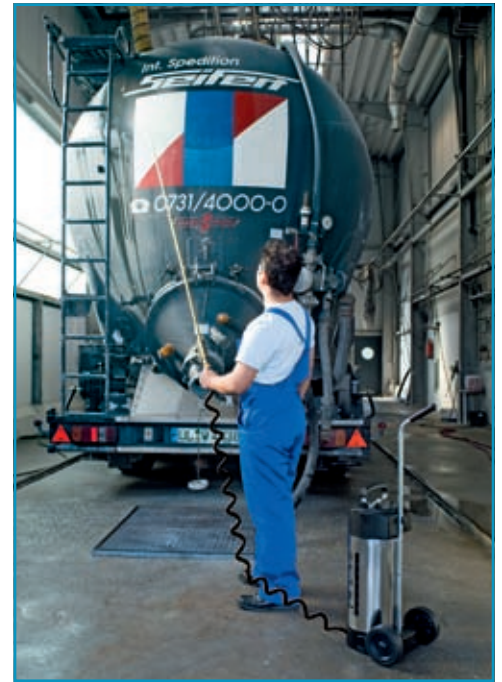
○ not part of the equipment    ● default equipment    technical changes reserved



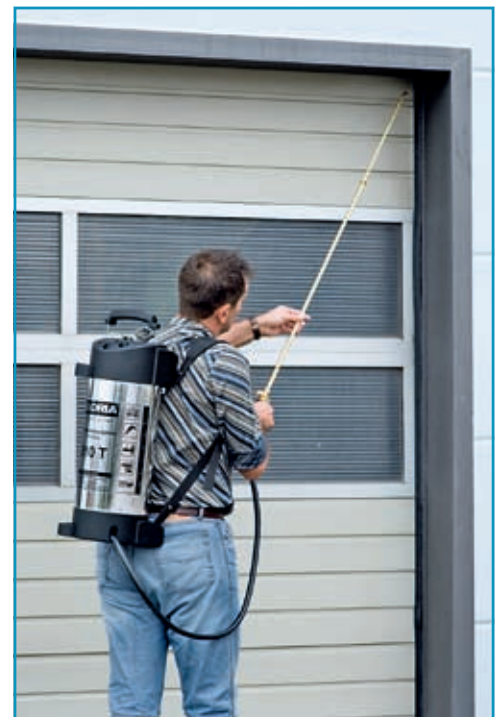
Even adequate to the heaviest duties: In building trade the models 405 T Profiline and 410 T Profiline are applied in particular for the dispersion of mould oil.



410 TKS Profiline	505 T Profiline	505 TK Profiline	510 T Profiline	510 TK Profiline
416.0000	506.0000	506.2701	512.0000	512.2700
404 643 600 0333	404 643 600 0357	404 643 600 0562	404 643 600 0371	404 643 600 0456
6 bar	6 bar	6 bar	6 bar	6 bar
10 l	5 l	5 l	10 l	10 l
steel with high-grade plastic interior coating	stainless steel, rust-proof	stainless steel, rust-proof	stainless steel, rust-proof	stainless steel, rust-proof
•	•	•	•	•
•	•	•	•	•
•	•	•	•	•
2 padded carrying straps with quick-release system and backrest	padded carrying strap	padded carrying strap	2 padded carrying straps with quick-release system and backrest	2 padded carrying straps with quick-release system and backrest
•	○	○	○	○
•	○	•	○	•
optional	○	○	optional	optional
•	•	•	•	•



Mobile and flexible: the right partner for long distances. If larger distances have to be covered regularly when working with the sprayer, the TKS and TRK models offer significant advantages. The spiral hose (TKS) expands up to 5 m if requested. The use of the optional transport trolley enables a change of location noticeably easier.



Efficient, sturdy and stainless: The special material properties of the stainless steel tank also make it suitable for even the most demanding uses. Due to their resistiveness against aggressive sprayed media and tough operating conditions they are frequently encountered in the field of pest control.



**Spraying without repumping:** Where big surface areas are to be treated, the models with integrated compressor connection provide high operating convenience. Particularly in the cleaning trade the TK and TKS models are frequently employed.



Made in Germany

## Water feeding device type 415

In building construction and civil engineering, in steel construction or in redevelopment of facades diamond core drilling machines are often employed. These require a continuous supply of cooling water to compensate for excessive heat and material wearout. The GLORIA water feeding device 415 is characterized by its versatile applicability. It can be attached to hand-held and drill stand controlled wet drilling machines as well as to disc grinders or similar devices.



Water feeding device type 415	
art. no.	415.0000
EAN code	404 643 600 0326
max. operating pressure	6 bar
capacity	10 l
container material	steel sheet with high-grade plastic interior coating
TÜV/GS tested	•
pressure gauge	•
safety valve	•
admissible operating temperature	+ 50 °C
miscellaneous	accessories: supplied with connecting hose



## Special sprayers SOX

The pressurized sprayers of the SOX model series are configured for the dispersion of acid and alkaline sprayed media. Owing to the acid resistant materials and components the devices are versatilely applicable: for cleaning of sanitary facilities, washing stations, open-air and indoor swimming pools, for the removal of cement residues on tiles and clinkers or in pest control and control of epidemics.



	SOX 5	SOX 125
art. no.	85.4000	93.0000
EAN code	404 643 600 0159	404 643 601 6556
max. operating pressure	3 bar	3 bar
capacity	5 l	1,25 l
container material	hard polyethylene and polypropylene	hard polyethylene and polypropylene
TÜV/GS tested	•	○
carrying system	ready to be shouldered	
miscellaneous	hose made of reinforced PVC plastic spray lance with acid resistant flat fanspray nozzle lance extension 0.5 m	adjustable nozzle

The following substances have been tested and can be used for distribution: Nitric acid up to 10%  
Acetic acid up to 10% · Propionic acid up to 10% · Hydrochloric acid up to 10% · Phosphoric acid up to 30%  
Sulphuric acid up to 30% · Potash up to 20% · Caustic soda up to 20%  
The specifications do not apply for mixtures! The sprayers are not suitable for the application of oil containing liquids.






# Special pressurized sprayers and fine sprayers

If on construction sites, in car-workshops or in pest control: The GLORIA pressurized and fine sprayers of the Profiline series are a reliable partner everywhere. Specific seals made of extremely durable Viton make the models as resistant as possible against thermal and chemical stress. The containers are manufactured of high-grade plastic material and convince by their outstanding robustness. Efficient pumps build up a maximum operating pressure of 3 bar in the tanks of the pressure sprayers, which enables long operating intervals without repumping and ensures a constant spraying pattern.



	Stratos 5	Pro 5	Pro 8
art. no.	179.0000	81.0725	92.0000
EAN code	400 632 551 0404	400 632 569 3046	404 643 601 3913
max. operating pressure	3 bar	3 bar	3 bar
capacity	5 l	5 l	8 l
container material	high-grade plastic	high-grade plastic	high-grade plastic
indicating pressure gauge	●	○	○
safety valve	●	●	●
efficient pump	●	●	●
carrying system	ready to be shouldered	ready to be shouldered	ready to be shouldered
 oil proof	●	●	●
miscellaneous	brass spray lance, spray lance attachment, adjustable brass nozzle, footrim	brass spray lance, adjustable brass nozzle	brass spray lance, spray lance attachment, adjustable brass nozzle, footrim



The models Pro 5 and Pro 8 have a capacity of 5 and 8 litres, respectively. Big filling funnels and convenient carrying straps make the work comfortable and simple. Frequent operational fields for these devices are the dispersion of sprayable construction chemicals like base coat, deep primer and primer surfacer, but on the other hand also moisturizing of wallpaper for ease of removal.




**Type 88** – suitable for the use of disinfecting agent EP-408 DA in food processing companies, tested by the German Association for Environmental Analysis (GUA)

 GUA Gesellschaft für Umweltsanalytik mbH



**Type 90**  
Spray overhead thanks to the flexible siphon tube

	Fine sprayer type 87	Fine sprayer type 88	Special pressure sprayer type 89	Special pressure sprayer type 90
art. no.	87.0000	88.0000	89.0000	90.0000
EAN code	404 643 600 0197	404 643 600 0203	400 632 550 6506	404 643 601 3814
max. operating pressure	○	○	3 bar	3 bar
capacity	0,5 l	1,0 l	1,0 l	1,25 l
container material	stable plastic	stable plastic	stable plastic	stable plastic
pump	double-acting precision pump	double-acting precision pump	precision pump	precision pump
safety valve	○	○	●	●
adjustable nozzle	●	●	● brass nozzle, with swivelling nozzle tip	●
 oil proof	●	●	●	●



The special pressurized sprayer type 89 has a capacity of 1 litre and is fitted out with a special precision pump, a safety valve and an adjustable nozzle with swivelling nozzle tip. A lance extension of 0.5 m is available as an accessory. In combination with the optional foam nozzle it makes a good job in engine or rim cleaning, for instance.

# PaintPro 5

The handyman's best friend – a robust sprayer which is designed for a wide range of uses: removing wall-paper when redecorating, the spraying of solvent-free primer (wall paint primer and wash primer) or the application of sprayable wood preservation oils and solvent-free wood scumble. The extensive equipment provides the PaintPro 5 model with a maximum of safety and comfort.

- Reinforced plastic spraying tube, length 40cm
- Special brass flat jet nozzle, 80°
- Bottom ring for the highest level of stability
- Oil-resistant version with Viton seals
- High-performance pump with an ergonomic handle
- Large filling funnel with an integrated lance holder
- Piston manometer with an integrated safety valve
- Extremely durable plastic 5l tank
- Max. operating pressure 3 bar for long working intervals and a constantly attractive spray pattern



	PaintPro 5
art. no.	105.0000
EAN code	404 643 602 0584
max. operating pressure	3 bar
capacity	5 l
container material	high-quality plastic
safety valve	●
efficient pump	●
carrying system	ready to be shouldered
oil proof	●
miscellaneous	spraying tube holder adjustable brass nozzle, 80° stable bottom ring robust plastic spraying lance

Follow the information in the instruction manual.  
Follow the instructions for use for the applied agent.

○ not part of the equipment      ● default equipment  
technical changes reserved







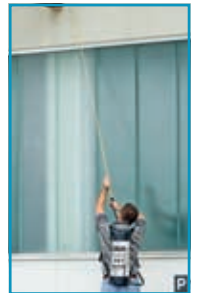
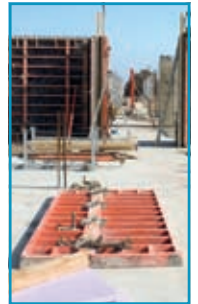


	405 T Profile	405 TK Profile	405 TKS Profile	410 T Profile	410 TI Profile	410 TK Profile	410 TKS Profile	505 T Profile	505 TK Profile	510 T Profile	510 TK Profile	PaintPro 5	Water feeding device type 415	SOX 5	SOX 8	SOX 125	Stratos 5	Pro 5	Pro 8	Fine sprayer type 87	Fine sprayer type 88	Special pressure sprayer type 89	Special pressure sprayer type 90	
•	•	•	•	•	•	•	•	•	•	•	•						•						•	
•	•	•	•	•	•	•	•	•	•	•	•													
•	•	•	•	•	•	•	•	•	•	•	•													
•	•	•	•	•	•	•	•	•	•	•	•													
•	•	•	•	•	•	•	•	•	•	•	•													
•	•	•	•	•	•	•	•	•	•	•	•													
•	•	•	•	•	•	•	•	•	•	•	•													
•	•	•	•	•	•	•	•	•	•	•	•													
•	•	•	•	•	•	•	•	•	•	•	•													
•	•	•	•	•	•	•	•	•	•	•	•													
•	•	•	•	•	•	•	•	•	•	•	•													
•	•	•	•	•	•	•	•	•	•	•	•											•	•	
•	•	•	•	•	•	•	•	•	•	•	•													

Other nozzles and filters are available upon request.

# Fields of application

Application	405 T Profile	405 TK Profile	405 TKS Profile	410 T Profile	410 TI Profile	410 TK Profile	410 TKS Profile	505 T Profile	505 TK Profile	510 T Profile	510 TK Profile	PaintPro 5	Water feeding device type 415	SOX 5 **	SOX 8 **	SOX 125 **	Stratos 5	Pro 5	Pro 8	Fine sprayer type 87	Fine sprayer type 88	Special pressure sprayer type 89	Special pressure sprayer type 90
<b>Building construction / civil engineering</b>																							
mould oil / release agent	●	●	●	●		●	●	●	●	●	●						●	●	●				
core drilling machine													●										
disc grinder													●										
channel drilling machine													●										
concrete curing / impregnation	●	●	●	●	●	●	●	●	●	●	●			●	●		●	●	●				
<b>Road building</b>																							
release agent for ceiling production	●	●	●	●	●	●	●	●	●	●	●						●	●	●				
manhole cover	●	●	●	●	●	●	●	●	●	●	●						●	●	●				
cleaning and preparation of building machines	●	●	●	●	●	●	●	●	●	●	●						●	●	●				
cleaning and preparation of vehicles	●	●	●	●	●	●	●	●	●	●	●						●	●	●				
curbstones	●	●	●	●	●	●	●	●	●	●	●						●	●	●				
road marking	●	●	●	●	●	●	●	●	●	●	●						●	●	●				
<b>Handcraft</b>																							
painter – wallpaper solvent													●	●	●		●	●	●	●			
primer surfacer													●	●	●		●	●	●	●			
tiler – base coat													●	●	●		●	●	●	●			
heating engineering – boiler purification														●	●								
room cleaner									●	●	●	●		●	●						●	●	●
cleaning and disinfection of sanitary facilities									●	●	●	●		●	●						●	●	●
cleaning and disinfection of swimming pools									●	●	●	●		●	●						●	●	●
kitchen cleaning									●	●	●	●		●	●						●	●	●
floor cleaning									●	●	●	●		●	●								
stone cleaning									●	●	●	●		●	●								
upholstery and carpet impregnation									●	●	●	●		●	●								
vermin exterminator / pest control									●	●	●	●		●	●	●					●	●	●





Application	405 T Profile	405 TK Profile	405 TKS Profile	410 T Profile	410 TI Profile	410 TK Profile	410 TKS Profile	505 T Profile	505 TK Profile	510 T Profile	510 TK Profile	PaintPro 5	Water feeding device type 415	SOX 5 **	SOX 8 **	SOX 125 **	Stratos 5	Pro 5	Pro 8	Fine sprayer type 87	Fine sprayer type 88	Special pressure sprayer type 89	Special pressure sprayer type 90
<b>Car care</b>																							
preliminary car care								●	●	●	●			●	●	●				●	●	●	●
engine cleaning								●	●	●	●			●	●	●				●	●	●	●
rim cleaning														●	●	●							
solving dirt from truck blankets								●	●	●	●			●	●					●	●	●	
brake cleaning (dependent on cleaning agent)														●	●	●							
conservation								●	●	●	●			●	●					●	●	●	
<b>Industry</b>																							
machine conservation								●	●	●	●			●	●	●	●	●	●	●	●	●	●
coolant								●	●	●	●			●	●	●	●	●	●	●	●	●	●
lubrication with liquid grease								●	●	●	●						●	●	●	●	●	●	●
<b>Agriculture &amp; forestry</b>																							
plant protection*								●	●														
weedkilling*								●	●														
spraying media against hunting game bite								●	●	●	●			●	●								
disinfection in livestock farming								●	●	●	●			●	●					●	●	●	
<b>Food industry</b>																							
dairy	ON REQUEST																						
butcher's	ON REQUEST																						
<b>Miscellaneous applications</b>																							
canteen kitchen	ON REQUEST																						
limewashing	●	●	●	●	●	●	●	●	●	●	●												
turnout lubrication	●	●	●	●		●	●	●	●	●	●						●	●	●				

\* We will be pleased to inform you about our special sprayers for plant protection and herbicides.  
 \*\* The sprayers are not suitable for the application of oil containing liquids.

A prior testing of the material resistance to the liquids which are being used is recommended if necessary



This brochure was presented by:

98-138 - Errors and technical changes reserved.

**GLORIA**<sup>®</sup>  
Equipment for home and garden

**GLORIA**  
**Haus- und Gartengeräte GmbH**  
Därmanbusch 7 · D-58456 Witten  
Tel.: +49 (0) 2302 / 700 0  
Fax: +49 (0) 2302 / 700 46  
[www.industrie-spruehgeraete.de](http://www.industrie-spruehgeraete.de)

Vertriebs- und Marketingzentrale  
Edisonallee 3 · D-89231 Neu-Ulm  
Tel.: +49 (0) 731 / 140 60 560  
Fax: +49 (0) 731 / 140 60 53  
[info@gloria-garten.com](mailto:info@gloria-garten.com)

Kunden-/Ersatzteilservice  
Tel.: 0180 55 899 09\*  
Fax: +49 (0) 2302 / 700 54  
[service@gloria-garten.com](mailto:service@gloria-garten.com)

\* 14 Cent/min. für Anrufe aus dem dt. Festnetz